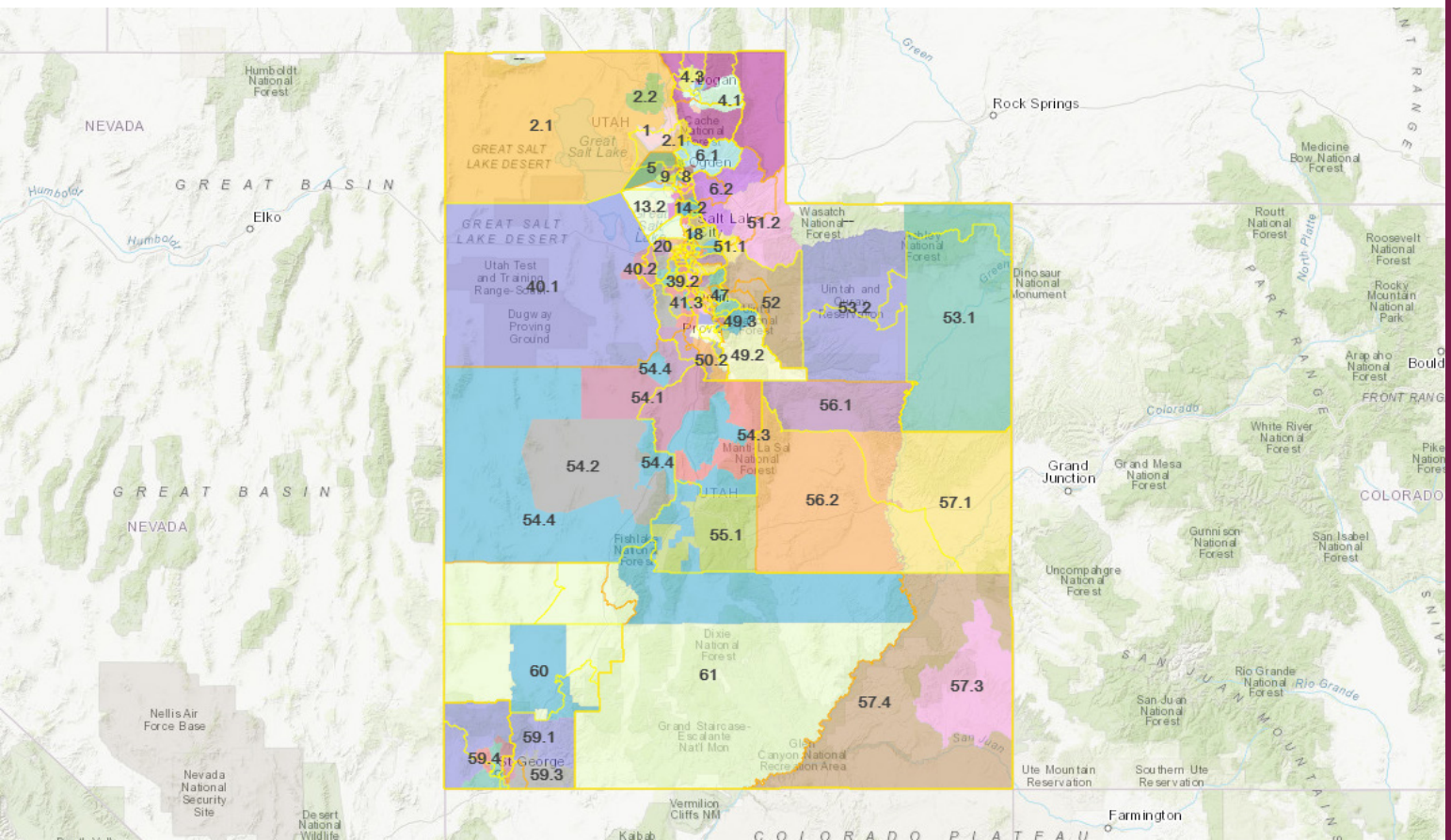




January 2019

# Assigning Utah Small Areas to Utah State Legislative Districts



## Background

In 2018, Utah state legislators asked the Utah Department of Health (UDOH) Office of Health Disparities (OHD) to produce a report on the status of health disparities by Utah state legislative district. This report was the impetus for assigning Utah Small Areas to Utah State Legislative Districts.

## Utah State Legislative Districts

Utah is divided into 29 Senate districts and 75 House districts, each with elected officials invested in the health and wellbeing of their constituents. While reporting health status by geographic area such as state, county, ZIP Code, or census block is common, using state legislative districts as the geographic unit of analysis is unique. Access to health data by individual district can help elected officials make informed decisions to foster and improve the health status of the individuals in their districts, elevating the health of Utah overall.

## Utah Small Areas

The UDOH has developed exclusive data resources including the Utah Small Areas. The Utah Small Areas group similar communities providing a picture of health and community within legislative districts.

“Utah Small Areas” refers to a set of geographic areas in Utah with population sizes ranging from approximately 8,000 to 86,000 persons. These geographic areas are especially useful for conducting public health assessments in communities and for developing tailored policies and interventions to improve the health and quality of life of Utah residents. The UDOH and local health departments collaborated to identify and define 99 small areas in Utah. More information can be found at: <https://ibis.health.utah.gov/resource/Guidelines.html>.

## Methods

The UDOH used ArcGIS online, a geographic information system, to simultaneously map the Utah Small Areas and Utah state legislative districts. Legislative district boundaries were highlighted to determine which Utah Small Areas were fully or partially located within the boundaries. All of the Utah Small Areas which were visibly located within the district boundaries at a scale of six miles were assigned to that district. When applicable, Utah Small Areas were assigned to multiple legislative districts.

## Results

The results are displayed in the tables on the following pages.

## Utah State Senate Districts

District	County(ies)	ID #	Utah Small Area	Local Health District
1	Salt Lake	17	Salt Lake City (Rose Park)	Salt Lake County LHD
		20	Magna	
		21.1	Salt Lake City (Glendale) V2	
		22.1	West Valley (Center)	
		22.2	West Valley (West) V2	
		23.1	West Valley (East) V2	
2	Salt Lake	17	Salt Lake City (Rose Park)	Salt Lake County LHD
		18	Salt Lake City (Avenues)	
		19.1	Salt Lake City (Foothill/East Bench)	
		21.1	Salt Lake City (Glendale) V2	
		23.1	West Valley (East) V2	
		24.1	Salt Lake City (Downtown) V2	
		24.2	Salt Lake City (Southeast Liberty)	
		25	South Salt Lake	
		26.3	Millcreek (East)	
3	Salt Lake	23.1	West Valley (East) V2	Salt Lake County LHD
		24.2	Salt Lake City (Southeast Liberty)	
		25	South Salt Lake	
		26.1	Salt Lake City (Sugar House)	
		26.2	Millcreek (South)	
		27.1	Holladay V2	
		30	Taylorsville (East)/Murray (West)	
		31	Murray	

## Utah State Senate Districts

District	County(ies)	ID #	Utah Small Area	Local Health District
4	Salt Lake	19.1	Salt Lake City (Foothill/East Bench)	Salt Lake County LHD
		24.2	Salt Lake City (Southeast Liberty)	
		26.1	Salt Lake City (Sugar House)	
		26.2	Millcreek (South)	
		26.3	Millcreek (East)	
		27.1	Holladay V2	
		28	Cottonwood	
5	Salt Lake	22.1	West Valley (Center)	Salt Lake County LHD
		23.1	West Valley (East) V2	
		29.1	Kearns V2	
		30	Taylorsville (East)/Murray (West)	
		30.1	Taylorsville (West)	
6	Salt Lake	30	Taylorsville (East)/Murray (West)	Salt Lake County LHD
		30.1	Taylorsville (West)	
		33.2	West Jordan (Northeast) V2	
		34.1	West Jordan (Southeast)	
7 (cont.)	Utah	41.2	Lehi	Utah County LHD
		41.3	Saratoga Springs	
		42.1	American Fork	
		45	Orem (West)	
		48.1	Provo (West City Center)	
		48.2	Provo (East City Center)	
		49.1	Salem City	

## Utah State Senate Districts

District	County(ies)	ID #	Utah Small Area	Local Health District
7 (cont.)	Utah	49.2	Spanish Fork	Utah County LHD
		49.3	Springville	
		49.4	Mapleton	
		50.1	Utah County (South) V2	
		50.2	Payson	
8	Salt Lake	26.2	Millcreek (South)	Salt Lake County LHD
		26.3	Millcreek (East)	
		28	Cottonwood	
		30	Taylorsville (East)/Murray (West)	
		31	Murray	
		32	Midvale	
		36.1	Sandy (West)	
		37	Sandy (Northeast)	
9	Salt Lake	28	Cottonwood	Salt Lake County LHD
		36.1	Sandy (West)	
		36.2	Sandy (Center) V2	
		37	Sandy (Northeast)	
		38	Sandy (Southeast)	
		39.1	Draper	
10 (cont.)	Salt Lake	34.1	West Jordan (Southeast)	Salt Lake County LHD
		34.2	West Jordan (West)/Copperton	
		35.1	South Jordan V2	
		35.2	Daybreak	

## Utah State Senate Districts

District	County(ies)	ID #	Utah Small Area	Local Health District
10 (cont.)	Salt Lake	36.1	Sandy (West)	Salt Lake County LHD
		39.3	Herriman	
11	Salt Lake, Utah	36.2	Sandy (Center) V2	Salt Lake County LHD
		39.1	Draper	
		39.2	Riverton/Bluffdale	
		39.3	Herriman	
		41.2	Lehi	Utah County LHD
		42.1	American Fork	
		42.2	Alpine	
12	Salt Lake, Tooele	20	Magna	Salt Lake County LHD
		22.2	West Valley (West) V2	
		29.1	Kearns V2	
		30.1	Taylorsville (West)	
		33.2	West Jordan (Northeast) V2	
		34.2	West Jordan (West)/Copperton	
		39.3	Herriman	
		40.2	Tooele Valley	Tooele County LHD
13 (cont.)	Salt Lake, Utah	39.2	Riverton/Bluffdale	Salt Lake County LHD
		39.3	Herriman	
		41.1	Eagle Mountain/Cedar Valley	Utah County LHD
		41.2	Lehi	
		41.3	Saratoga Springs	
		42.1	American Fork	

## Utah State Senate Districts

District	County(ies)	ID #	Utah Small Area	Local Health District
13 (cont.)	Salt Lake, Utah	50.1	Utah County (South) V2	Utah County LHD
14	Utah	41.2	Lehi	Utah County LHD
		42.1	American Fork	
		42.2	Alpine	
		43	Pleasant Grove/Lindon	
		46	Orem (East)	
		47	Provo/BYU	
15	Utah	42.1	American Fork	Utah County LHD
		43	Pleasant Grove/Lindon	
		44	Orem (North)	
		45	Orem (West)	
		46	Orem (East)	
		47	Provo/BYU	
		48.1	Provo (West City Center)	
16	Utah, Wasatch	46	Orem (East)	Utah County LHD
		47	Provo/BYU	
		48.1	Provo (West City Center)	
		48.2	Provo (East City Center)	
		52	Wasatch County	Wasatch County LHD
17 (cont.)	Box Elder, Cache, Tooele	1	Brigham City	Bear River LHD
		2.1	Box Elder County (Other) V2	
		2.2	Tremonton	
		3.1	Logan V2	

## Utah State Senate Districts

District	County(ies)	ID #	Utah Small Area	Local Health District
17 (cont.)	Box Elder, Cache, Tooele	4.1	Cache County (Other)/Rich County (All) V2	Bear River LHD
		4.2	Hyrum	
		40.1	Tooele County (Other)	Tooele County LHD
		40.2	Tooele Valley	
18	Davis, Morgan, Weber	6.2	Morgan County	Weber-Morgan LHD
		7	Ogden (Downtown)	
		8	South Ogden	
		10	Riverdale	
		11	Clearfield Area/Hooper	Davis County LHD
		12	Layton/South Weber	
19	Morgan, Summit, Weber	5	Ben Lomond	Weber-Morgan LHD
		6.1	Weber County (East)	
		6.2	Morgan County	
		7	Ogden (Downtown)	
		8	South Ogden	
		51.1	Park City	Summit County LHD
		51.2	Summit County (East)	
20	Davis, Weber	5	Ben Lomond	Weber-Morgan LHD
		7	Ogden (Downtown)	
		9	Roy/Hooper	
		10	Riverdale	
		11	Clearfield Area/Hooper	Davis County LHD



## Utah State Senate Districts

District	County(ies)	ID #	Utah Small Area	Local Health District
21	Davis	11	Clearfield Area/Hooper	Davis County LHD
		12	Layton/South Weber	
		13.1	Kaysville/Fruit Heights	
		13.2	Syracuse	
22	Davis	11	Clearfield Area/Hooper	Davis County LHD
		12	Layton/South Weber	
		13.1	Kaysville/Fruit Heights	
		14.1	Centerville	
		14.2	Farmington	
		15.2	Woods Cross/West Bountiful	
23	Davis, Salt Lake	14.1	Centerville	Davis County LHD
		14.2	Farmington	
		15.1	North Salt Lake	
		15.2	Woods Cross/West Bountiful	
		16	Bountiful	
		17	Salt Lake City (Rose Park)	Salt Lake County LHD
		18	Salt Lake City (Avenues)	
24 (cont.)	Beaver, Garfield, Juab, Kane, Millard, Piute, Sanpete, Sevier, Utah, Wayne	50.1	Utah County (South) V2	Utah County LHD
		50.2	Payson	
		54.1	Nephi/Mona	Central LHD
		54.2	Delta/Fillmore	
		54.3	Sanpete Valley	
		54.4	Central (Other)	

## Utah State Senate Districts

District	County(ies)	ID #	Utah Small Area	Local Health District
24 (cont.)	Beaver, Garfield, Juab, Kane, Millard, Piute, Sanpete, Sevier, Utah, Wayne	55.1	Richfield/Monroe/Salina	Central LHD
		61	Southwest Local Health District (Other)	Southwest LHD
25	Cache, Rich	3.1	Logan V2	Bear River LHD
		3.2	North Logan	
		4.1	Cache County (Other)/Rich County (All) V2	
		4.3	Smithfield	
26	Daggett, Duchesne, Summit, Uintah, Wasatch	51.1	Park City	Summit County LHD
		51.2	Summit County (East)	
		52	Wasatch County	Wasatch County LHD
		53.1	Daggett and Uintah County	TriCounty LHD
		53.2	Duchesne County	
27	Carbon, Emery, Grand, San Juan, Utah, Wasatch	49.2	Spanish Fork	Utah County LHD
		49.3	Springville	
		49.4	Mapleton	
		50.2	Payson	
		52	Wasatch County	Wasatch County LHD
		56.1	Carbon County	Southeast LHD
		56.2	Emery County	
		57.1	Grand County	
		57.3	Blanding/Monticello	San Juan LHD
		57.4	San Juan County (Other)	

## Utah State Senate Districts

District	County(ies)	ID #	Utah Small Area	Local Health District
28	Beaver, Iron, Washington	59.1	Washington County (Other) V2	Southwest LHD
		59.2	Washington City	
		59.3	Hurricane/La Verkin	
		60	Cedar City	
		61	Southwest Local Health District (Other)	
29	Washington	58	St George	Southwest LHD
		59.1	Washington County (Other) V2	
		59.2	Washington City	
		59.3	Hurricane/La Verkin	
		59.4	Ivins/Santa Clara	

## Utah State House Districts

District	County(ies)	ID #	Utah Small Area	Local Health District
1	Box Elder, Cache	1	Brigham City	Bear River LHD
		2.1	Box Elder County (Other) V2	
		2.2	Tremonton	
		4.1	Cache County (Other)/Rich County (All) V2	
		4.3	Smithfield	
2	Utah	41.1	Eagle Mountain/Cedar Valley	Utah County LHD
		41.2	Lehi	
		41.3	Saratoga Springs	
3	Cache	3.1	Logan V2	Bear River LHD
		3.2	North Logan	
		4.1	Cache County (Other)/Rich County (All) V2	
		4.3	Smithfield	
4	Cache	3.1	Logan V2	Bear River LHD
		3.2	North Logan	
		4.1	Cache County (Other)/Rich County (All) V2	
		4.3	Smithfield	
5	Cache	3.1	Logan V2	Bear River LHD
		4.1	Cache County (Other)/Rich County (All) V2	
		4.3	Smithfield	
6	Utah	41.2	Lehi	Utah County LHD
		41.3	Saratoga Springs	
		42.1	American Fork	

## Utah State House Districts

District	County(ies)	ID #	Utah Small Area	Local Health District
7	Weber	5	Ben Lomond	Weber-Morgan LHD
		6.1	Weber County (East)	
		5	Ben Lomond	
8	Weber	6.1	Weber County (East)	Weber-Morgan LHD
		7	Ogden (Downtown)	
		8	South Ogden	
9	Weber	5	Ben Lomond	Weber-Morgan LHD
		7	Ogden (Downtown)	
		9	Roy/Hooper	
		10	Riverdale	
10	Weber	7	Ogden (Downtown)	Weber-Morgan LHD
		8	South Ogden	
		10	Riverdale	
11	Davis, Weber	8	South Ogden	Weber-Morgan LHD
		10	Riverdale	
		11	Clearfield Area/Hooper	Davis County LHD
		12	Layton/South Weber	
12	Davis, Weber	5	Ben Lomond	Weber-Morgan LHD
		7	Ogden (Downtown)	
		9	Roy/Hooper	
		11	Clearfield Area/Hooper	Davis County LHD
		13.2	Syracuse	

## Utah State House Districts

District	County(ies)	ID #	Utah Small Area	Local Health District
13	Davis	11	Clearfield Area/Hooper	Davis County LHD
		13.2	Syracuse	
14	Davis	11	Clearfield Area/Hooper	Davis County LHD
		12	Layton/South Weber	
		13.2	Syracuse	
15	Davis	11	Clearfield Area/Hooper	Davis County LHD
		12	Layton/South Weber	
		13.1	Kaysville/Fruit Heights	
		13.2	Syracuse	
16	Davis	11	Clearfield Area/Hooper	Davis County LHD
		12	Layton/South Weber	
17	Davis	12	Layton/South Weber	Davis County LHD
		13.1	Kaysville/Fruit Heights	
		14.2	Farmington	
18	Davis	13.1	Kaysville/Fruit Heights	Davis County LHD
		14.1	Centerville	
		14.2	Farmington	
		15.2	Woods Cross/West Bountiful	
		16	Bountiful	
19	Davis	14.1	Centerville	Davis County LHD
		16	Bountiful	
20 (cont.)	Davis	15.1	North Salt Lake	Davis County LHD
		15.2	Woods Cross/West Bountiful	

## Utah State House Districts

District	County(ies)	ID #	Utah Small Area	Local Health District
20 (cont.)	Davis	16	Bountiful	Davis County LHD
21	Tooele	40.2	Tooele Valley	Tooele County LHD
22	Salt Lake	20	Magna	Salt Lake County LHD
		22.2	West Valley (West) V2	
		29.1	Kearns V2	
		34.2	West Jordan (West)/Copperton	
		39.3	Herriman	
23	Salt Lake	17	Salt Lake City (Rose Park)	Salt Lake County LHD
		21.1	Salt Lake City (Glendale) V2	
24	Salt Lake	17	Salt Lake City (Rose Park)	Salt Lake County LHD
		18	Salt Lake City (Avenues)	
		19.1	Salt Lake City (Foothill/East Bench)	
		24.1	Salt Lake City (Downtown) V2	
25	Salt Lake	24.1	Salt Lake City (Downtown) V2	Salt Lake County LHD
		24.2	Salt Lake City (Southeast Liberty)	
		25	South Salt Lake	
		26.1	Salt Lake City (Sugar House)	
26 (cont.)	Salt Lake	17	Salt Lake City (Rose Park)	Salt Lake County LHD
		20	Magna	
		21.1	Salt Lake City (Glendale) V2	
		22.1	West Valley (Center)	
		22.2	West Valley (West) V2	
		23.1	West Valley (East) V2	

## Utah State House Districts

District	County(ies)	ID #	Utah Small Area	Local Health District
26 (cont.)	Salt Lake	24.1	Salt Lake City (Downtown) V2	Salt Lake County LHD
		25	South Salt Lake	
27	Utah	41.2	Lehi	Utah County LHD
		42.1	American Fork	
		42.2	Alpine	
		43	Pleasant Grove/Lindon	
		47	Provo/BYU	
28	Salt Lake, Summit	18	Salt Lake City (Avenues)	Salt Lake County LHD
		19.1	Salt Lake City (Foothill/East Bench)	
		24.1	Salt Lake City (Downtown) V2	
		24.2	Salt Lake City (Southeast Liberty)	
		26.1	Salt Lake City (Sugar House)	
		26.3	Millcreek (East)	
		51.1	Park City	Summit County LHD
29	Box Elder, Weber	1	Brigham City	Bear River LHD
		2.1	Box Elder County (Other) V2	
		5	Ben Lomond	Weber-Morgan LHD
		6.1	Weber County (East)	
		7	Ogden (Downtown)	
30	Salt Lake	22.1	West Valley (Center)	Salt Lake County LHD
		22.2	West Valley (West) V2	
31 (cont.)	Salt Lake	22.1	West Valley (Center)	Salt Lake County LHD
		22.2	West Valley (West) V2	



## Utah State House Districts

District	County(ies)	ID #	Utah Small Area	Local Health District
31 (cont.)	Salt Lake	23.1	West Valley (East) V2	Salt Lake County LHD
32	Salt Lake	36.1	Sandy (West)	Salt Lake County LHD
		36.2	Sandy (Center) V2	
		38	Sandy (Southeast)	
		39.1	Draper	
33	Salt Lake	22.1	West Valley (Center)	Salt Lake County LHD
		23.1	West Valley (East) V2	
		30	Taylorsville (East)/Murray (West)	
34	Salt Lake	23.1	West Valley (East) V2	Salt Lake County LHD
		30	Taylorsville (East)/Murray (West)	
		30.1	Taylorsville (West)	
35	Salt Lake	23.1	West Valley (East) V2	Salt Lake County LHD
		25	South Salt Lake	
		26.1	Salt Lake City (Sugar House)	
		30	Taylorsville (East)/Murray (West)	
		31	Murray	
36	Salt Lake	26.1	Salt Lake City (Sugar House)	Salt Lake County LHD
		26.2	Millcreek (South)	
		26.3	Millcreek (East)	
		28	Cottonwood	
37 (cont.)	Salt Lake	27.1	Holladay V2	Salt Lake County LHD
		28	Cottonwood	
		30	Taylorsville (East)/Murray (West)	

## Utah State House Districts

District	County(ies)	ID #	Utah Small Area	Local Health District
37 (cont.)	Salt Lake	31	Murray	Salt Lake County LHD
38	Salt Lake	29.1	Kearns V2	Salt Lake County LHD
		33.2	West Jordan (Northeast) V2	
		34.2	West Jordan (West)/Copperton	
39	Salt Lake	29.1	Kearns V2	Salt Lake County LHD
		30.1	Taylorsville (West)	
40	Salt Lake	26.1	Salt Lake City (Sugar House)	Salt Lake County LHD
		26.2	Millcreek (South)	
		27.1	Holladay V2	
		31	Murray	
41	Salt Lake	39.2	Riverton/Bluffdale	Salt Lake County LHD
		39.3	Herriman	
42	Salt Lake	34.1	West Jordan (Southeast)	Salt Lake County LHD
		34.2	West Jordan (West)/Copperton	
		35.2	Daybreak	
43	Salt Lake	33.2	West Jordan (Northeast) V2	Salt Lake County LHD
		34.1	West Jordan (Southeast)	
		34.2	West Jordan (West)/Copperton	
44	Salt Lake	30	Taylorsville (East)/Murray (West)	Salt Lake County LHD
		31	Murray	
		32	Midvale	
		36.1	Sandy (West)	

## Utah State House Districts

District	County(ies)	ID #	Utah Small Area	Local Health District
45	Salt Lake	28	Cottonwood	Salt Lake County LHD
		32	Midvale	
		36.1	Sandy (West)	
		36.2	Sandy (Center) V2	
		37	Sandy (Northeast)	
46	Salt Lake	28	Cottonwood	Salt Lake County LHD
		31	Murray	
		32	Midvale	
		37	Sandy (Northeast)	
		38	Sandy (Southeast)	
47	Salt Lake	32	Midvale	Salt Lake County LHD
		34.1	West Jordan (Southeast)	
		35.1	South Jordan V2	
		35.2	Daybreak	
		36.1	Sandy (West)	
48	Utah	43	Pleasant Grove/Lindon	Utah County LHD
		46	Orem (East)	
		47	Provo/BYU	
49	Salt Lake	28	Cottonwood	Salt Lake County LHD
		37	Sandy (Northeast)	
		38	Sandy (Southeast)	
		39.1	Draper	

## Utah State House Districts

District	County(ies)	ID #	Utah Small Area	Local Health District
50	Salt Lake	35.1	South Jordan V2	Salt Lake County LHD
		35.2	Daybreak	
51	Salt Lake	39.1	Draper	Salt Lake County LHD
		39.2	Riverton/Bluffdale	
52	Salt Lake	35.2	Daybreak	Salt Lake County LHD
		39.2	Riverton/Bluffdale	
		39.3	Herriman	
53	Daggett, Duchesne, Morgan, Rich, Summit	4.1	Cache County (Other)/Rich County (All) V2	Bear River LHD
		6.2	Morgan County	Weber-Morgan LHD
		51.1	Park City	Summit County LHD
		51.2	Summit County (East)	
		53.1	Daggett and Uintah County	TriCounty LHD
		53.2	Duchesne County	
54	Summit, Wasatch	51.1	Park City	Summit County LHD
		52	Wasatch County	Wasatch County LHD
55	Duchesne, Uintah	53.1	Daggett and Uintah County	TriCounty LHD
		53.2	Duchesne County	
56	Utah	41.2	Lehi	Utah County LHD
		42.1	American Fork	
57	Utah	42.1	American Fork	Utah County LHD
		43	Pleasant Grove/Lindon	
58 (cont.)	Juab, Sanpete	54.1	Nephi/Mona	Central LHD
		54.3	Sanpete Valley	

## Utah State House Districts

District	County(ies)	ID #	Utah Small Area	Local Health District
58 (cont.)	Juab, Sanpete	54.4	Central (Other)	Central LHD
59	Utah	42.1	American Fork	Utah County LHD
		43	Pleasant Grove/Lindon	
		44	Orem (North)	
		45	Orem (West)	
60	Utah	44	Orem (North)	Utah County LHD
		45	Orem (West)	
		46	Orem (East)	
61	Utah	41.2	Lehi	Utah County LHD
		41.3	Saratoga Springs	
		42.1	American Fork	
		45	Orem (West)	
		47	Provo/BYU	
		48.1	Provo (West City Center)	
		49.2	Spanish Fork	
62	Washington	58	St George	Southwest LHD
		59.2	Washington City	
63	Utah	47	Provo/BYU	Utah County LHD
		48.1	Provo (West City Center)	
		48.2	Provo (East City Center)	
64 (cont.)	Utah	47	Provo/BYU	Utah County LHD
		48.1	Provo (West City Center)	
		48.2	Provo (East City Center)	

## Utah State House Districts

District	County(ies)	ID #	Utah Small Area	Local Health District
64 (cont.)	Utah	49.2	Spanish Fork	Utah County LHD
		49.3	Springville	
65	Utah	49.2	Spanish Fork	Utah County LHD
		49.3	Springville	
		49.4	Mapleton	
		50.2	Payson	
66	Utah	49.1	Salem City	Utah County LHD
		49.2	Spanish Fork	
		50.2	Payson	
67	Utah	41.1	Eagle Mountain/Cedar Valley	Utah County LHD
		41.2	Lehi	
		49.1	Salem City	
		49.2	Spanish Fork	
		50.1	Utah County (South) V2	
		50.2	Payson	
68	Beaver, Juab, Millard, Tooele, Utah	40.1	Tooele County (Other)	Tooele County LHD
		40.2	Tooele Valley	
		50.1	Utah County (South) V2	Utah County LHD
		54.1	Nephi/Mona	Central LHD
		54.2	Delta/Fillmore	
		54.4	Central (Other)	
		61	Southwest Local Health District (Other)	

## Utah State House Districts

District	County(ies)	ID #	Utah Small Area	Local Health District
69	Carbon, Duchesne, Emery, Grand	53.2	Duchesne County	TriCounty LHD
		56.1	Carbon County	Southeast LHD
		56.2	Emery County	
		57.1	Grand County	
70	Emery, Grand, Sanpete, Sevier	54.3	Sanpete Valley	Central LHD
		54.4	Central (Other)	
		55.1	Richfield/Monroe/Salina	
		56.2	Emery County	Southeast LHD
		57.1	Grand County	
71	Iron, Washington	58	St George	Southwest LHD
		59.1	Washington County (Other) V2	
		59.2	Washington City	
		59.3	Hurricane/La Verkin	
		60	Cedar City	
		61	Southwest Local Health District (Other)	
72	Iron	60	Cedar City	Southwest LHD
		61	Southwest Local Health District (Other)	
73	Beaver, Garfield, Kane, Piute, San Juan, Sevier, Wayne	54.4	Central (Other)	Central LHD
		57.3	Blanding/Monticello	San Juan LHD
		57.4	San Juan County (Other)	
		61	Southwest Local Health District (Other)	Southwest LHD
74 (cont.)	Washington	58	St George	Southwest LHD
		59.1	Washington County (Other) V2	

## Utah State House Districts

District	County(ies)	ID #	Utah Small Area	Local Health District
74 (cont.)	Washington	59.4	Ivins/Santa Clara	Southwest LHD
75	Washington	58	St George	Southwest LHD
		59.1	Washington County (Other) V2	
		59.2	Washington City	
		59.4	Ivins/Santa Clara	

## Limitations

Although all of the Utah Small Areas were assigned to one or more state legislative districts, this assignment does not take into account population density. This means that although a small area may be assigned to a legislative district, it might not make up a large proportion of that district's population. This is important to take into consideration when health data is presented by Utah Small Areas in connection with the assignment to legislative district. Future work could be done to address this limitation.

## References

Utah Department of Health Center for Health Data and Informatics. (2018). Geographic Assessment and Utah Small Areas. <https://ibis.health.utah.gov/resource/Guidelines.html>

Utah House of Representatives. House Members. <https://house.utah.gov/house-members/>

Utah Senate. (2019). Senate Roster. <https://senate.utah.gov/senate-roster/>

The maps used to overlay the Utah Small Areas and the Utah state legislative districts were created using ArcGIS® software by Esri. ArcGIS® and ArcMap™ are the intellectual property of Esri and are used herein under license. Copyright © Esri. All rights reserved. For more information about Esri® software, please visit [www.esri.com](http://www.esri.com).



## Acknowledgments

### Primary Author

Brittney Okada, MPH, CHES (UDOH Office of Health Disparities)

### Contributors

Kim Neerings (UDOH Office of Public Health Assessment)

Michael Friedrichs, MS (UDOH Bureau of Health Promotion)

Dulce Díez, MPH, MCHES (UDOH Office of Health Disparities)

Navina Forsythe, PhD, MPA (UDOH Center for Health Data and Informatics)

Claudia Bohner, MPH (UDOH Bureau of Health Promotion)

Shelly Wagstaff, (UDOH Bureau of Health Promotion)

Jordan Green, MPH (UDOH Bureau of Health Promotion)

Christine Espinel (UDOH Office of Health Disparities)

Charla Haley (UDOH Office of Public Information and Marketing)

January 2019

Utah Department of Health

Office of Health Disparities

disparities@utah.gov

[www.health.utah.gov/disparities](http://www.health.utah.gov/disparities)

Suggested citation: Office of Health Disparities (2019). *Assigning Utah Small Areas to Utah State Legislative Districts*. Salt Lake City, UT: Utah Department of Health.