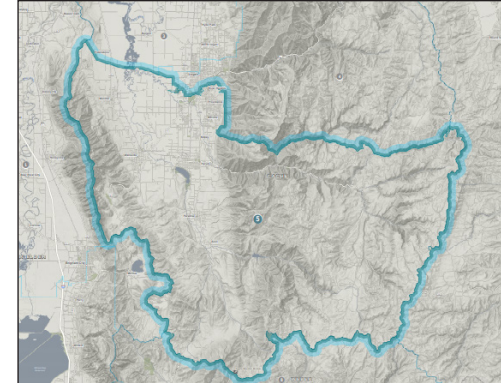


Utah State House District 5

This profile is part of a series highlighting the status of health disparities in the 29 Senate districts and 75 House districts in Utah. Profiles were constructed using health data grouped by Utah Small Areas and the Utah Health Improvement Index. These tools provide a unique, innovative, and practical approach to understanding health disparities and working toward health equity.



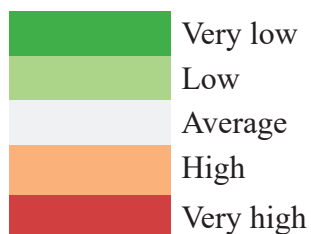
What are health disparities? Health disparities are more than adverse health outcomes. A “disparity” implies that the difference is avoidable, unfair, and unjust.

What is health equity? Pursuing health equity means striving for the highest possible standard of health for all people and giving special attention to the needs of those communities at greatest risk for health disparities.

Guide to this profile

1 Utah Small Areas Each profile compiles information about the Utah Small Areas located fully or partially within the legislative district. When applicable, Utah Small Areas were assigned to multiple legislative districts.

2 The Utah Health Improvement Index (HII) The Utah HII is a composite measure of health equity indicators. It includes nine indicators that describe important aspects of demographics, socioeconomic deprivation, economic inequality, resource availability, and opportunity structure. The higher the group, the more improvements the area needs. The HII groups are indicated by color.

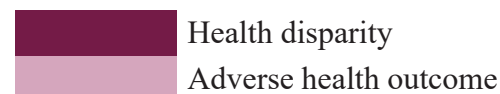


3 Health Indicators The UDOH selected health indicators to provide an overall picture of health in the communities. While not all-inclusive, they provide some indication of the Utah Small Area profiles, general health status, health care coverage, chronic diseases, and mental health.

4 Health Disparities When combined, the Utah HII and health indicators identify health disparities in Utah Small Areas and legislative districts:

1. A health disparity exists if a Utah Small Area with a poor health outcome compared with Utah has a high or very high HII.
2. An adverse health outcome exists if a Utah Small Area with a poor health outcome compared with the state has a very low, low, or average HII.

Health disparities and adverse health outcomes are identified by color.



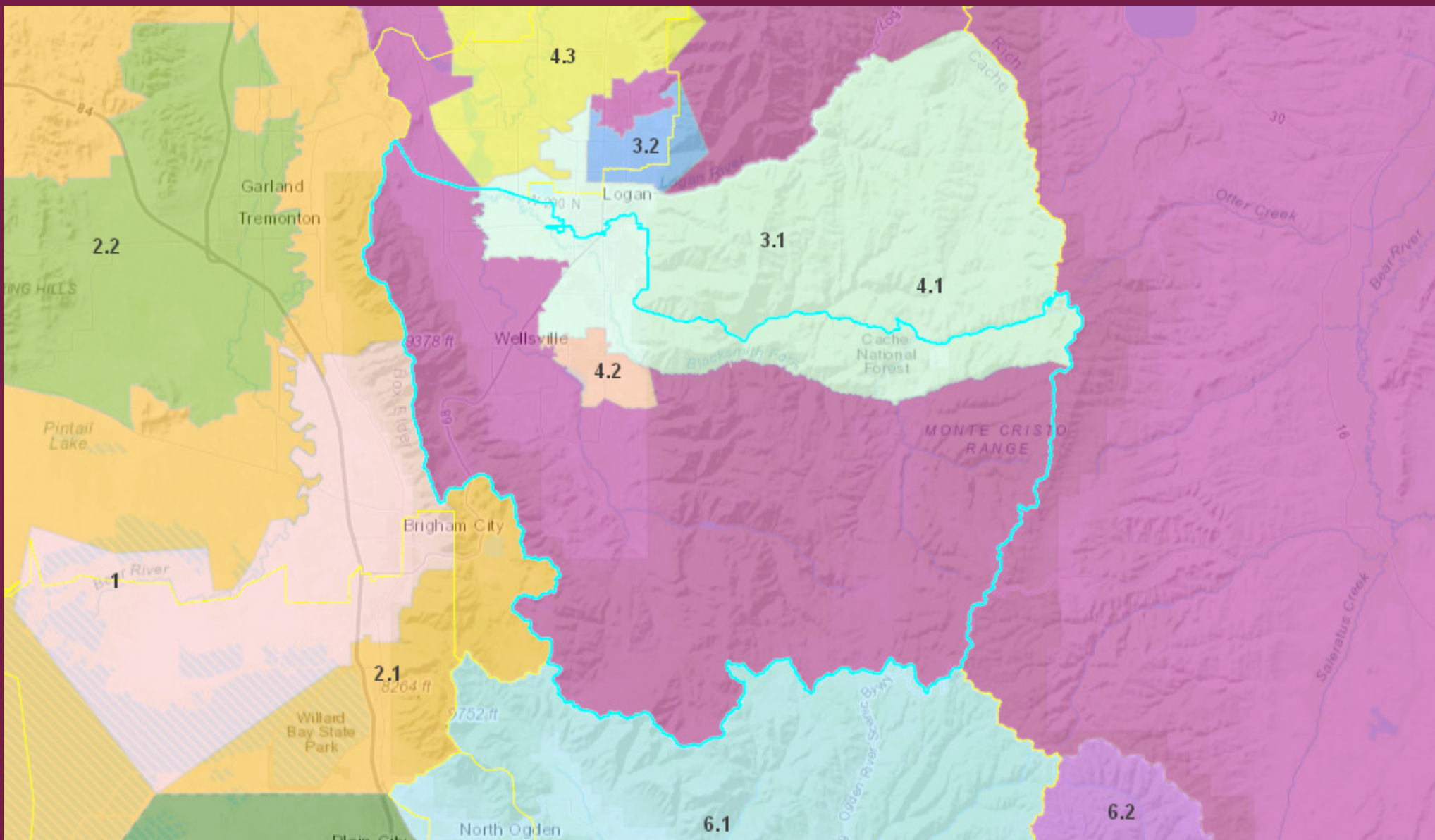
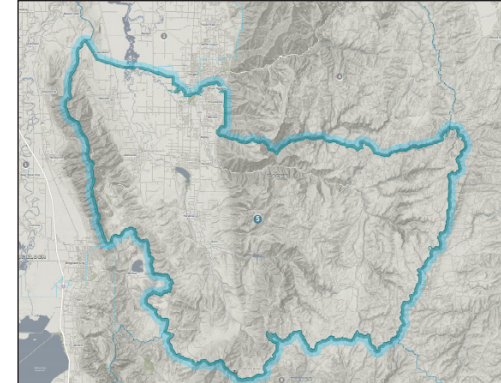
Refer to demographic profiles for legislative districts for context in understanding and interpreting health data and health disparities: <https://le.utah.gov/documents/demographic/profiles.htm>.



Utah State House District 5

Utah Small Areas Each profile compiles information about the Utah Small Areas located fully or partially within the legislative district. When applicable, Utah Small Areas were assigned to multiple legislative districts. In the map below, Utah Small Areas are colored and numbered and the legislative district is outlined in blue.

A report produced by the Utah Department of Health Office of Health Disparities.

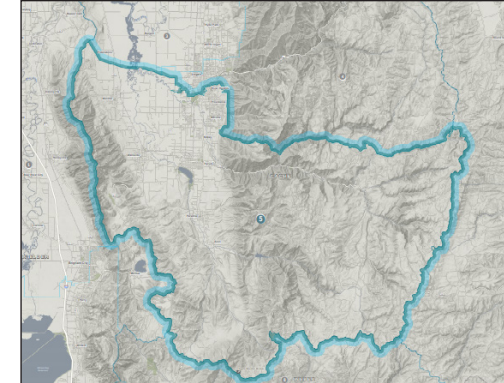


Health Disparities by Utah State Legislative District 2019

Utah State House District 5

This profile is part of a series highlighting the status of health disparities in the 29 Senate districts and 75 House districts in Utah. Profiles use health data grouped by Utah Small Areas and the Utah Health Improvement Index (HII) and provide an innovative and practical approach to working toward health equity.

A report produced by the Utah Department of Health Office of Health Disparities.



1. A **health disparity** exists if a Utah Small Area with a poor health outcome compared with Utah has a high or very high HII.
2. An **adverse health outcome** exists if a Utah Small Area with a poor health outcome compared with the state has a very low, low, or average HII.

| Small Area Profile | | | | | General Health | | | Healthcare Coverage |
|--------------------|-------------------------|-----------|-------------------|--------------------------------------|---|--------------------------------------|--|--|
| Small Area # | Name of Utah Small Area | HII Group | Population (2017) | % Racial/Ethnic Minority (2013-2017) | Infant Mortality Rate (per 1,000) (2010-2015) | Life Expectancy at Birth (2013-2017) | Adults Reporting Poor or Fair General Health (%) (2015-2017) | No Healthcare Coverage (%) (2013-2017) |
| -- | State of Utah | -- | 3,101,989 | 21.0% | 5.2 | 79.8 | 13.0% | 10.0% |
| 3.1 | Logan V2 | High | 57,055 | 18.8% | 6.3 | 80.6 | 10.5% | 10.1% |
| 4.1 | Cache (Other)/Rich V2 | Low | 24,191 | 9.4% | 5.7 | 81.3 | 7.0% | 6.1% |
| 4.2 | Hyrum | High | 8,998 | 20.4% | 4.3 * | 81.7 | 11.1% * | 12.1% * |

*Use caution in interpreting; the estimate has a coefficient of variation > 30% and is therefore deemed unreliable by Utah Department of Health standards.

**The estimate has been suppressed because 1) the relative standard error is greater than 50% or 2) the observed number of events is very small and not appropriate for publication.

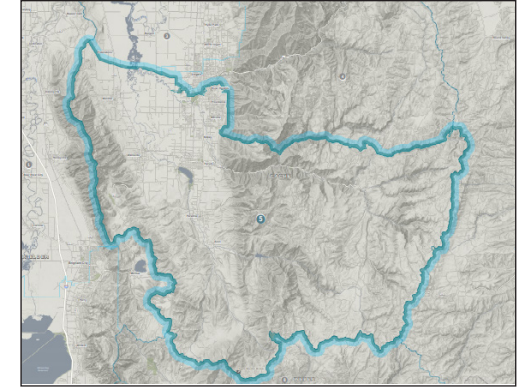
N/A - The ACS uses 5-digit ZIP Code Tabulation Areas (ZCTAs) based on boundaries from the 2010 Census. Some Small Areas consist of ZIP Codes that were introduced after 2010; therefore, data are not available for these Small Areas from the ACS.

Health Disparities by Utah State Legislative District 2019

Utah State House District 5

This profile is part of a series highlighting the status of health disparities in the 29 Senate districts and 75 House districts in Utah. Profiles use health data grouped by Utah Small Areas and the Utah Health Improvement Index (HII) and provide an innovative and practical approach to working toward health equity.

A report produced by the Utah Department of Health Office of Health Disparities.



1. A **health disparity** exists if a Utah Small Area with a poor health outcome compared with Utah has a high or very high HII.
2. An **adverse health outcome** exists if a Utah Small Area with a poor health outcome compared with the state has a very low, low, or average HII.

| Small Area Profile | | | Chronic Disease | | | Mental Health | | |
|--------------------|-------------------------|-----------|--------------------------------------|-------------------------------|--|---|--|---|
| Small Area # | Name of Utah Small Area | HII Group | Adults with Diabetes (%) (2013-2017) | Adult Obesity (%) (2015-2017) | Adults Reporting Current Smoking (%) (2015-2017) | Adults Reporting Poor Mental Health (%) (2015-2017) | Suicide Rate (per 100,000) (2015-2017) | Drug Poisoning Death Rate (per 100,000) (2015-2017) |
| -- | State of Utah | -- | 7.7% | 25.8% | 9.0% | 16.5% | 22.0 | 22.4 |
| 3.1 | Logan V2 | High | 7.0% | 25.1% | 7.0% | 17.4% | 17.1 | 13.4 |
| 4.1 | Cache (Other)/Rich V2 | Low | 7.9% | 27.4% | 3.8% * | 14.7% | 11.8 * | 15.4 * |
| 4.2 | Hyrum | High | 9.7% * | 38.6% | ** | 15.6% * | ** | 22.7 * |

*Use caution in interpreting; the estimate has a coefficient of variation > 30% and is therefore deemed unreliable by Utah Department of Health standards.

**The estimate has been suppressed because 1) the relative standard error is greater than 50% or 2) the observed number of events is very small and not appropriate for publication.

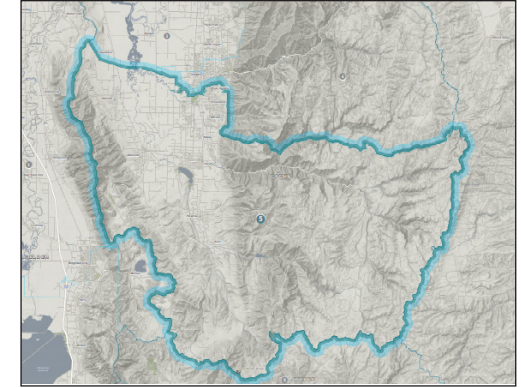
N/A - The ACS uses 5-digit ZIP Code Tabulation Areas (ZCTAs) based on boundaries from the 2010 Census. Some Small Areas consist of ZIP Codes that were introduced after 2010; therefore, data are not available for these Small Areas from the ACS.

Health Disparities by Utah State Legislative District 2019

Utah State House District 5

This profile is part of a series highlighting the status of health disparities in the 29 Senate districts and 75 House districts in Utah. Profiles use health data grouped by Utah Small Areas and the Utah Health Improvement Index (HII) and provide an innovative and practical approach to working toward health equity.

A report produced by the Utah Department of Health Office of Health Disparities.



Profile Notes

Access the full report and additional district profiles at <http://www.health.utah.gov/disparities/data/ohd/HealthDisparitiesbyUtahStateLegislativeDistrict2019.pdf>.

Health Indicator Definitions

Population: Annual population estimates for ZIP Code areas by sex and age groups. (UDOH Center for Health Data and Informatics (CHDI), IBIS Version 2017)

% Racial/Ethnic Minority: Percentage of total population minus percentage of population identifying as non-Hispanic White. (American Community Survey (ACS) 2013-2017)

Infant Mortality Rate: Number of infant deaths (age 364 days or less) per 1,000 live births to a Utah resident mother regardless of where they occurred. (Numerator: Utah Death Certificate Database 2012-2017; Denominator: Utah Birth Certificate Database 2012-2017)

Life Expectancy at Birth: An estimate of the expected average number of years of life (or a person's age at death) for individuals who were born into a particular population. (Utah Death Certificate Database 2013-2017)

Adults Reporting Poor or Fair General Health: Age-adjusted percentage of adults aged 18 years and older who reported fair or poor general health. (Utah Behavioral Risk Factor Surveillance System (BRFSS) 2015-2017)

No Healthcare Coverage: Age-adjusted percentage of population without any kind of health care coverage. (Utah BRFSS 2013-2017)

Adults with Diabetes: Age-adjusted percentage of adults aged 18 years and older who reported being told by a health care professional that he or she has diabetes (excludes women who were told they had diabetes only during pregnancy or those who reported they had "borderline" or prediabetes). (Utah BRFSS 2013-2017)

Adult Obesity: Age-adjusted percentage of adults aged 18 years and older who have a body mass index (BMI) of greater than or equal to 30.0 kg/m² calculated from self-reported weight and height. (Utah BRFSS 2015-2017)

Adults Reporting Current Smoking: Age-adjusted percentage of adults aged 18 years and older who smoke cigarettes every day or some days. (Utah BRFSS 2015-2017)

Adults Reporting Poor Mental Health: Age-adjusted percentage of adults aged 18 years and older who reported seven or more days when their mental health was not good in the past 30 days. (Utah BRFSS 2015-2017)

Suicide Rate: Number of resident deaths resulting from the intentional use of force against oneself (ICD-10 codes X60-X84, Y87.0, *U03), age-adjusted rate per 100,000 persons. (Utah Death Certificate Database 2015-2017)

Drug Poisoning Death Rate: Number of deaths among Utah residents resulting from drug poisoning (ICD-10 codes X40-X44, X60-X64, X85, Y10-Y14), age-adjusted rate per 100,000 population. (Utah Death Certificate Database 2015-2017)

References

Center for Social Research at North Dakota State University (2014). North Dakota State Legislative District Profiles. <https://www.ndcompass.org/legislative-district-profiles/>

Singh, GK. Area deprivation and widening inequalities in US mortality, 1969-1998. *American Journal of Public Health*. 2003; 93(7); 1137-1143.

Utah Department of Health Center for Health Data and Informatics. (2018). Geographic Assessment and Utah Small Areas. <https://ibis.health.utah.gov/resource/Guidelines.html>

Utah Department of Health Office of Health Disparities. (2019). Assigning Utah Small Areas to Utah State Legislative Districts. <http://www.health.utah.gov/disparities/data/utah-legislative-districts/AssigningUtahSmallAreasStateLegislativeDistricts.pdf>

Utah Department of Health Office of Health Disparities. (2018). The Utah Health Improvement Index. <http://health.utah.gov/disparities/data/ohd/UtahHII.pdf>

Utah Department of Health Office of Public Health Assessment. (2018). *Utah Health Improvement Plan 2018*. <https://ibis.health.utah.gov/pdf/opha/publication/UHIP.pdf>

Utah Lieutenant Governor Elections. (2019). PDF Maps. <https://elections.utah.gov/map/district-maps>

The large district map in this profile was created using ArcGIS® software by Esri. ArcGIS® and ArcMap™ are the intellectual property of Esri and are used herein under license. Copyright © Esri. All rights reserved. For more information about Esri® software, please visit www.esri.com.